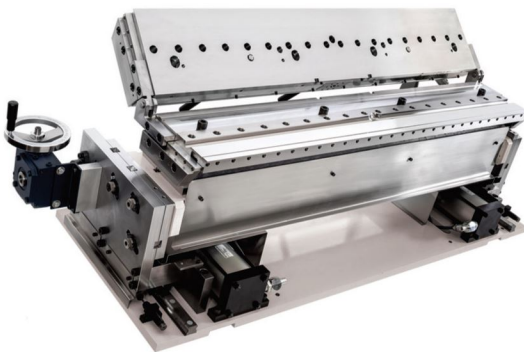


# COATING TECH SLOT DIES

PROCESS KNOWLEDGE · PRECISION · PERFORMANCE



## SLOT DIE COATING TECHNOLOGY ADVANTAGES

Slot dies provide more reliable, faster, and more efficient coating operations than any other coating method. See immediate savings when you experience fewer product defects, accelerated production, and less raw material waste. How does a slot die system provide these results?

- Slot dies are designed specifically to distribute fluids uniformly while maintaining temperature resulting in fewer defects and less raw material waste. A slot die is custom designed to provide optimal conditions for the coating process.
- Slot dies work in a closed system providing a stable environment eliminating the majority of contaminants or other problem-causing variables.
- Slot dies provide precision results and are designed to a specific process requirement. The die can be customized to specific coating widths, discreet coating of specialized products, and other fluid or substrate behaviors and leads to increased production speeds.
- Slot die systems with pre-metered coating, or positive coat weight control, help eliminate wasted coating fluid

## WORK WITH COATING TECH SLOT DIES

Coating Tech Slot Dies was founded in service and brings many advantages to your coating project and process. We specialize in slot die coating systems and have become experts in the field because of our focus on this efficient coating method.

### Process Knowledge:

The team of engineers at Coating Tech Slot Dies are experienced at solving process problems for clients in a wide range of industries. In particular Coating Tech has extensive experience in adhesives, aerospace, construction, energy, filtration, graphics, medical and optical films industries. From design to installation, Coating Tech shares the client's goal of an efficient and successful coating process.

### Precision Manufacturing:

Our facility has full, on-site slot die manufacturing capabilities with machine tool research and development, and analytical tool divisions. Our products are manufactured in the United States of America with exacting quality control.

### Product Performance:

The service you receive after the sale will ensure your coating system maintains peak performance for maximum return on investment. As experts in the science of slot dies, we are on the leading edge of new product development and are uniquely positioned to ensure our coating systems continue to serve you as new technologies and material advances affect your industry.

## Superior Service

*Coating Tech Slot Dies leads the industry in project management. Always meet your timeframe and budget with CTSD Production Plans including delivery dates, approval deadlines, and manufacturing timeframes.*

*The science of slot dies*

SHANGHAI YUZE ELECTROMECHANICAL EQUIPMENT CO., LTD.

Shanghai Jinshan Industrial Zone, No. 818, No. 56

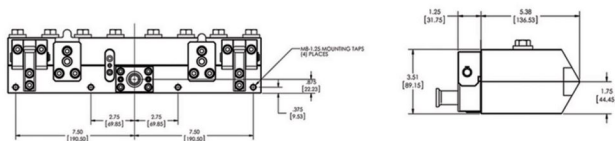
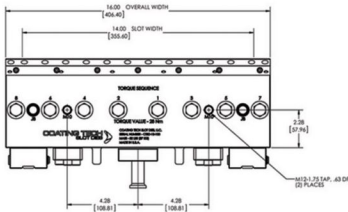
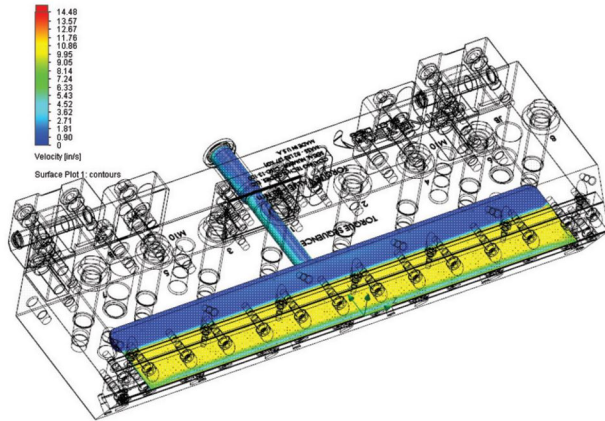
OFFICE +021 60892191

MOBILE 18049958686

yuze.li@anyouweb.com

# COATING TECH SLOT DIES

PROCESS KNOWLEDGE · PRECISION · PERFORMANCE



## COATING TECH SLOT DIE AVAILABLE SPECIFICATIONS:

**Standard die body flatness/straightness tolerance:** 0.0001 inch (2.54 microns) maximum deviation over the entire length of each die half

**Slot Die Positioner:** Repeatability and accuracy within 0.0001 inch (2.54 microns)

**Coat Width:** Up to 80.00 inches (2032 mm)

**Fluid Viscosity:** 1-500,000 cP

**Number of Layers:**

- Slot Dies: 1-3 layers
- Slot Curtain Dies: 1-3 layers
- Slide Dies: Unlimited layers

**Standard Die Bodies:**

- Constructed of 15-5 ph stainless steel @ condition H1025.
- Optional die body construction in 316L stainless steel or Titanium.

## COATING TECH SLOT DIES FEATURES:

- Design one of three forms:
  - Fixed Lip
  - Flexible Lip
  - Rotary Rod
- Die hinge option to open the upper half in place to 135° for easy access
- Temperature control via cored holes or electric heaters
- Multi-layer coating via multiple manifolds
- Optional replaceable lip inserts

## COATING TECH SLOT DIES CAPABILITIES:

**Dies Designed For:**

- Lane coating capability
- Intermittent coating capability
- Simultaneous dual-sided coating capability

## Design & Manufacturing Process

*Coating Tech Slot Dies first designs the manifold based upon fluid characteristics and simulations. The body of the die is then designed around the manifold. Our precise manufacturing techniques to exacting tolerance ensures superior product performance.*

*The science of slot dies*

**SHANGHAI YUZE ELECTROMECHANICAL EQUIPMENT CO., LTD.**

Shanghai Jinshan Industrial Zone, No. 818, No. 56

OFFICE +021 60892191

MOBILE 18049958686

yuze.li@anyouweb.com